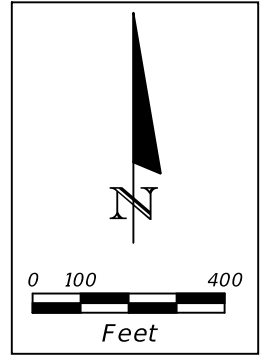


Q SR 429 (WEKIVA PKWY)
 STA. 1128+52.41, 51.1' RT =
 BEGIN RAMP HH1
 STA. 10+00.00

Q SR 429 (WEKIVA PKWY)
 STA. 1128+22.37, 62.8' LT =
 BEGIN RAMP GG
 STA. 10+00.00

Q INTERNATIONAL PKWY

Q SR 429 (WEKIVA PKWY)



WILSON RD

Q SR 429 (WEKIVA PKWY)
 STA. 1143+19.37, 66.5' LT =
 BEGIN RAMP 003
 STA. 10+00.00

RAMP GG

END RAMP GG
 STA. 40+04.15 =
 Q INTERNATIONAL PKWY
 STA. 116+46.18

Q SR 429 (WEKIVA PKWY)
 STA. 1141+69.25, 54.5' RT =
 BEGIN RAMP LL1
 STA. 10+00.00

Q SR 429 (WEKIVA PKWY)
 STA. 1156+62.89 =
 Q INTERNATIONAL
 PARKWAY
 STA. 113+02.62

Q SR 429 (WEKIVA PKWY)
 STA. 1145+29.29, 176' RT =
 BEGIN RAMP HH2
 STA. 10+00.00

METZ AVE

RAMP HH2

RAMP 003

RAMP LL1
 STA. 20+00.17, 15' LT =
 BEGIN RAMP LL2
 STA. 10+00.00

END RAMP HH2
 STA. 20+57.78 =
 Q INTERNATIONAL
 PARKWAY
 STA. 110+06.37

END RAMP HH1
 STA. 56+85.90 =
 Q INTERNATIONAL
 PARKWAY
 STA. 107+53.41

RAMP HH1

BEGIN RAMP LL3
 STA. 8+68.82
 Q INTERNATIONAL PKWY
 STA. 110+06.37

MATCHLINE
 Q SR 429 (WEKIVA PKWY) STA. 1170+00
 SEE INTERCHANGE LAYOUT (2)

RAMP LL3

RAMP LL2

RAMP LL1

MATCHLINE
 RAMP LL1 STA. 40+00
 SEE INTERCHANGE LAYOUT (2)

RAMP 004

Q INTERNATIONAL PKWY

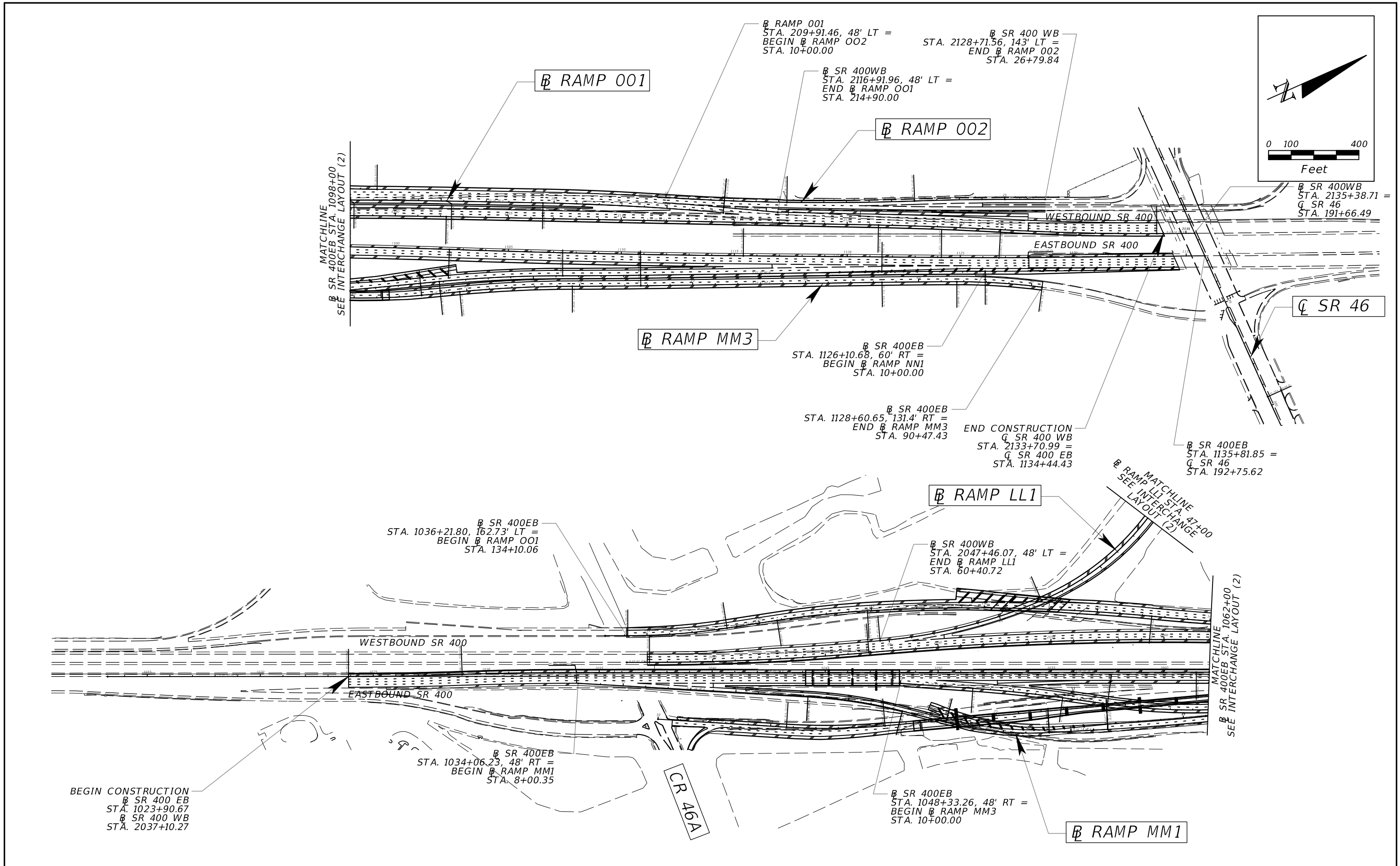
REVISIONS			
DATE	DESCRIPTION	DATE	DESCRIPTION

ATKINS NORTH AMERICA, INC.
 482 S. KELLER ROAD
 ORLANDO, FL 32810
 (407) 647-7275
 CERTIFICATE OF AUTHORIZATION NO.: 24
 CHAD A. SHOCKLEY, P.E.
 P.E. NO.: 69331

STATE OF FLORIDA DEPARTMENT OF TRANSPORTATION		
ROAD NO.	COUNTY	FINANCIAL PROJECT ID
SR 429	SEMINOLE	240200-4-52-01

SECTION 8
 INTERCHANGE LAYOUT (1)

SHEET NO.



REVISIONS				ATKINS NORTH AMERICA, INC. 482 S. KELLER ROAD ORLANDO, FL 32810 (407) 647-7275 CERTIFICATE OF AUTHORIZATION NO.: 24 CHAD A. SHOCKLEY, P.E. P.E. NO.: 69331	STATE OF FLORIDA DEPARTMENT OF TRANSPORTATION			SECTION 8 INTERCHANGE LAYOUT (3)	SHEET NO.
DATE	DESCRIPTION	DATE	DESCRIPTION		ROAD NO.	COUNTY	FINANCIAL PROJECT ID		
					SR 429	SEMINOLE	240200-4-52-01		